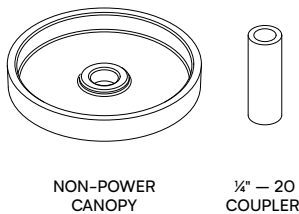


Recessed J-Box: Flat Ceiling (R1) + Sloped Ceiling (R2)

System Overview

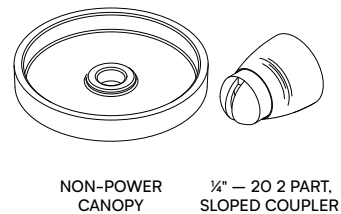
+ R1 – Non-Power Mounting Kit

- 1 x Non-Power Canopy
- 1 x ¼"-20 Griplock Coupler



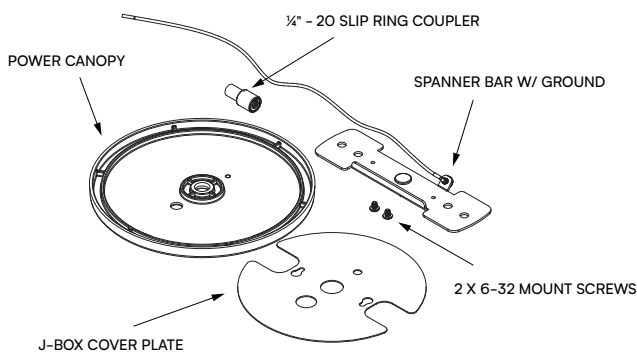
+ R2 – Non-Power Mounting Kit

- 1 x Non-Power Canopy
- 1 x ¼"-20 2 Part, Sloped Coupler



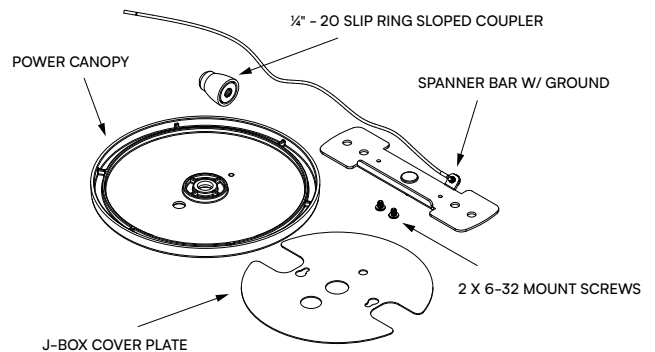
+ R1 – Power Mounting Kit 1-CCT + 2-CCT

- 1 x Spanner Bar w/ Ground
- 1 x J-box Cover Plate
- 1 x Power Canopy
- 1 x ¼"-20 Griplock Slip Ring Coupler
- 2 x 6-32 Mount Screws



+ R2 – Power Mounting Kit 1-CCT + 2-CCT

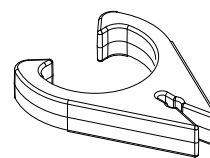
- 1 x Spanner Bar w/ Ground
- 1 x J-box Cover Plate
- 1 x Power Canopy
- 1 x ¼"-20 Griplock Slip Ring Sloped Coupler
- 2 x 6-32 Mount Screws



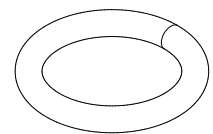
+ Power Cords + Suspension Cables

NOTE: 1 clip is to be placed on the power cord every 4" (102 mm).

NOTE: US power cords come with O-rings. For a 2-CCT application 2 x power cords are required. O-rings must be placed on the power cord prior to making electrical connections. The suspension cable can be fed through the O-ring during the suspension connection step.



CORD CLIP



O-RING*

Recessed J-Box: Flat Ceiling (R1) + Sloped Ceiling (R2)

Information

Important

- Read all instructions including wiring and mechanical details before the start of the installation.
- Install in accordance with the local and national building and electrical codes.
- Contact factory if you require assistance or have questions.
- Power cords come installed on fixtures.

Notes

- This instruction guide covers the installation of R1 and R2 mounting kits. Refer to the Instructions below for the necessary components and steps for a standard installation.
- Power mount canopies are compatible with 4" octagonal J-boxes and 4x4 square J-boxes.
- Dual power kits will come with two holes in the canopy for the power cords.



Tools Required

Tools:

- #2 Phillips Screw Driver



Safety Warnings

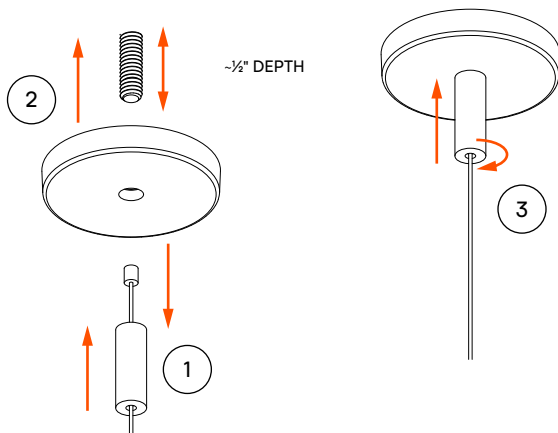
- **Shock hazard!** Fixtures must be connected to building ground via provided ground wire before connecting to main supply power.
- Disconnect or turn off power supply before attempting any installation maintenance or servicing operations.

Installation Steps — Drywall and Hard Lid R1 + R2

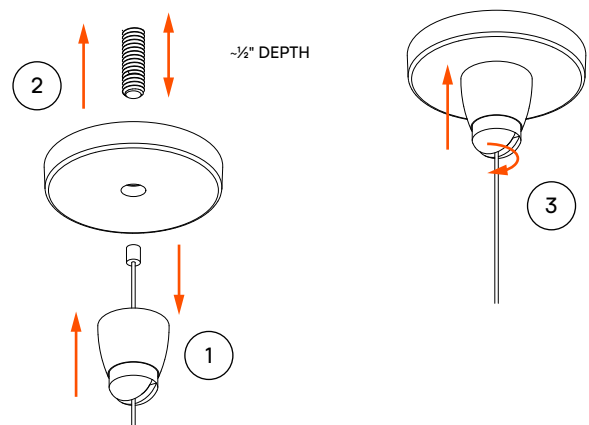
1 Install Non-Power Mounting Kit — Flat Ceiling (R1) + Sloped Ceiling (R2)

Identify and gather the non-power mounting kit. Locate assigned locations as per the layout drawings. Install appropriate ¼" - 20 threaded stud or lag bolts to structure by others. Set the depth to ½" exposed from the structure.

1. Feed suspension cable through the coupler.
2. Install the canopy so the ¼" - 20 hanger goes through the hole.
3. Secure canopy with coupler onto hanger.



R1 — FLAT CEILING



R2 — SLOPED CEILING

Recessed J-Box: Flat Ceiling (R1) + Sloped Ceiling (R2)

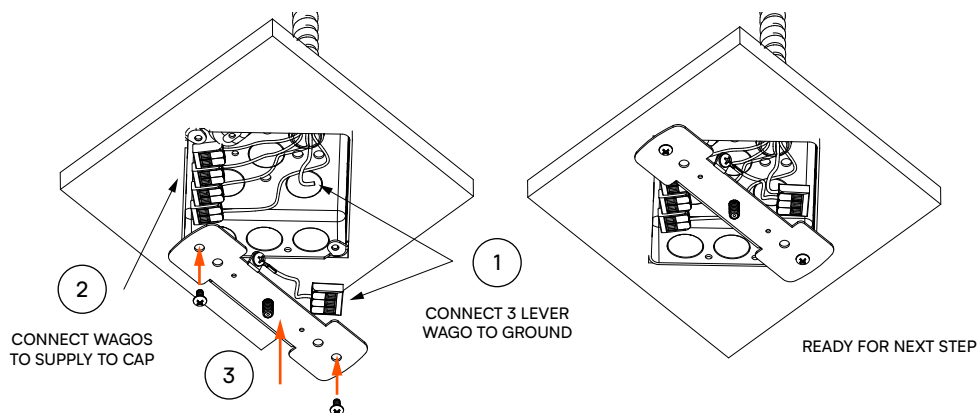
Installation Steps — Flat Ceiling 1-CCT + 2-CCT Power

2 Install 1-CCT Power Mounting Hardware

Identify and gather the 1-CCT power mounting kit. Locate assigned locations as per the layout drawings. For 2-CCT see step 6 to prepare canopy and J-Box cover plate. NOTE: Hardware is compatible with both 4x4 (shown) and standard octagonal J-Boxes.

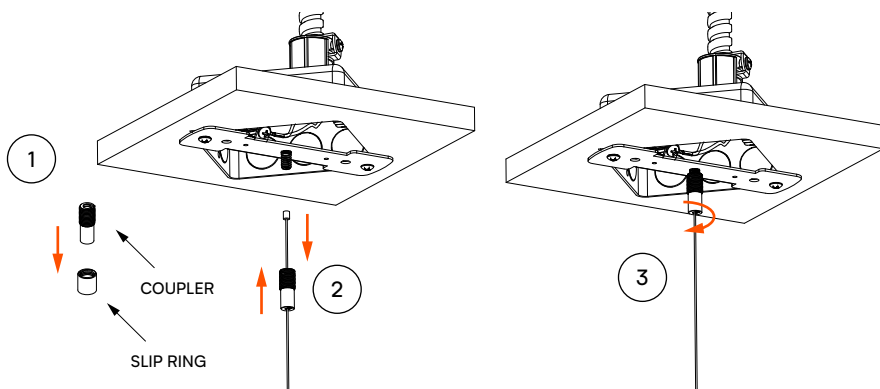
3 Install Spanner Bar and WAGOs

1. Install spanner bar ground wire to building ground with provided 3 lever WAGO.
2. Connect provided 2 lever WAGOs to supply line and control wires to cap.
3. Install spanner bar onto J-box (mounting J-box screws by others).



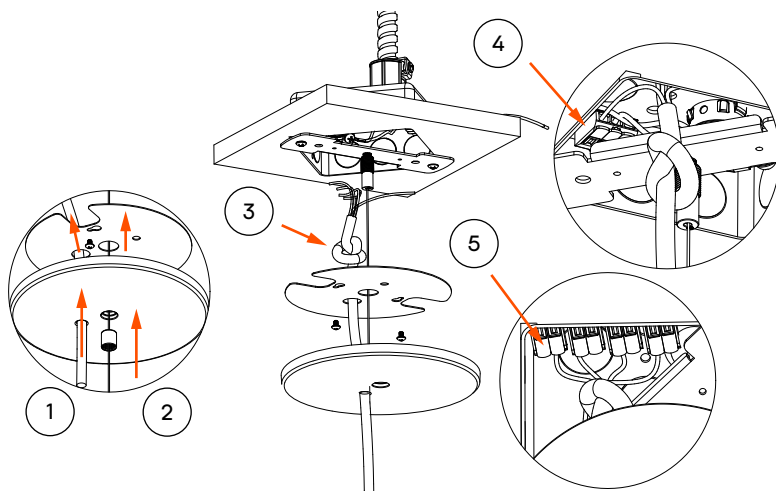
4 Install Coupler to Spanner Bar

1. Remove slip-ring from the coupler.
2. Feed suspension cable through slip-ring coupler (shown) or, slip-ring sloped coupler.
3. Secure to ¼" - 20 stud on spanner bar.



5 Install Power Cord and Make Electrical Connections

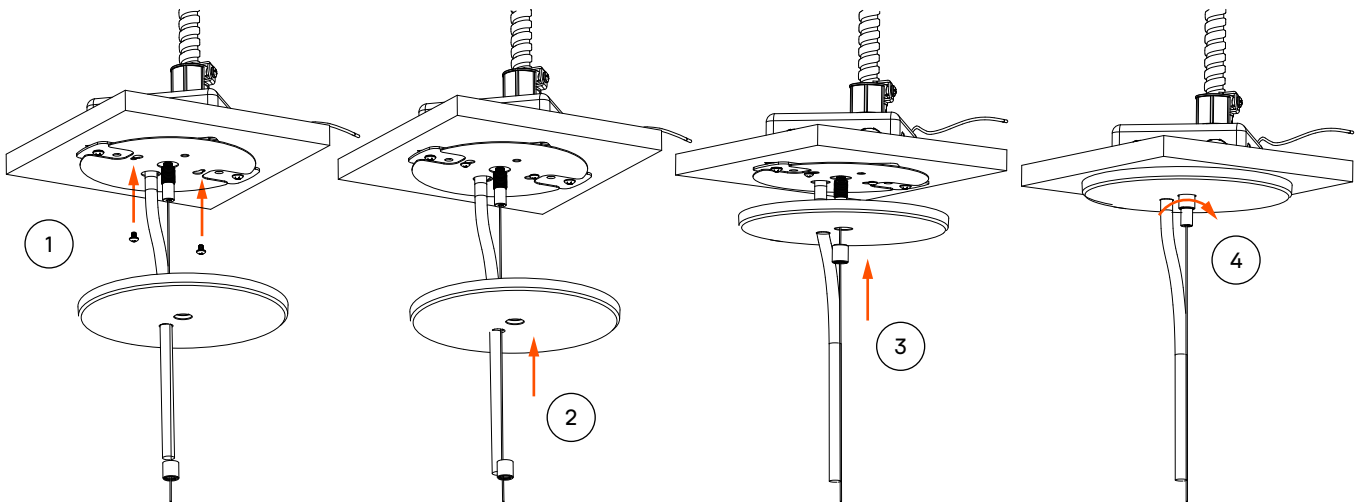
1. Feed the power cord through the power canopy and J-box cover plate.
2. Feed the suspension cable through the slip-ring, canopy, and cover plate.
3. Tie an overhand knot in the power cord once through the canopy and cover plate.
4. First connect the ground wire.
5. Connect remaining electrical connections.



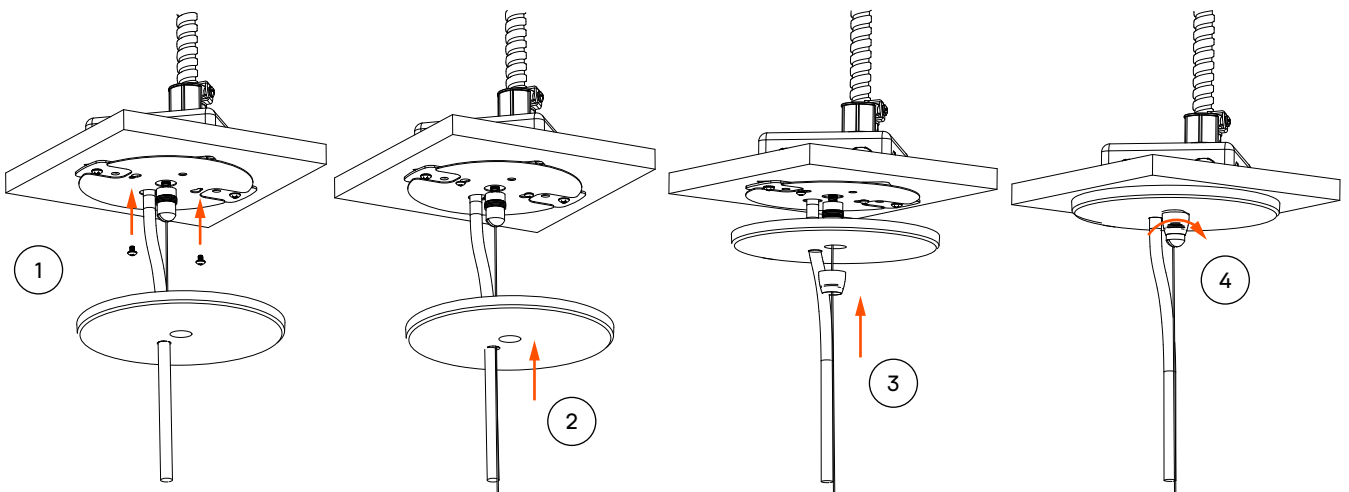
Recessed J-Box: Flat Ceiling (R1) + Sloped Ceiling (R2)

6 Finish Installing Canopy

1. Safely feed connected wires into J-box and cover with J-box cover plate.
2. Secure with provided 6-32 Phillips pan head screws.
3. Raise slip-ring.
4. Secure canopy onto coupler.



R1 — FLAT CEILING

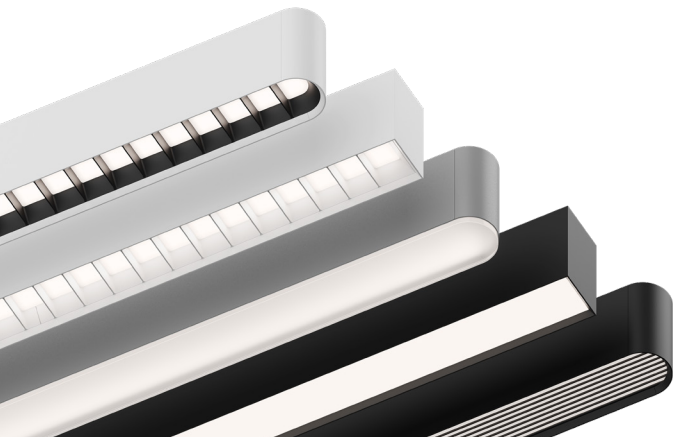
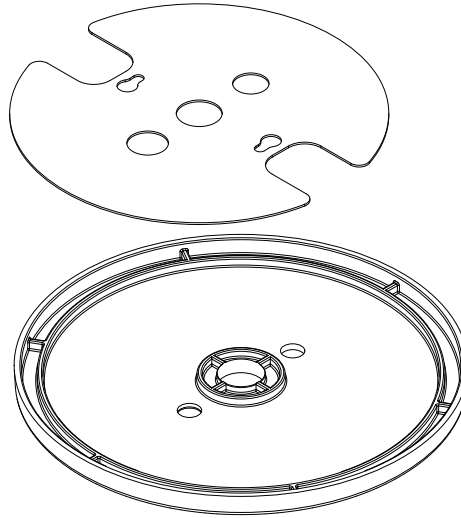


R2 — SLOPED CEILING

Recessed J-Box: Flat Ceiling (R1) + Sloped Ceiling (R2)

7 Dual Circuit (2-CCT) Options

Repeat Step 5 and follow the instructions to install the second power cord through the second hole.



Different thinking, by design.



**real help.
real people.
real answers.**

778.650.1000
justask@mindsetlighting.com