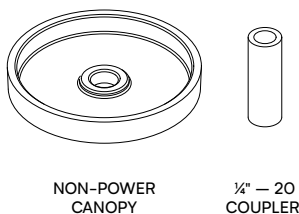


## Recessed J-Box: Flat Ceiling (R1) + Sloped Ceiling (R2)

### System Overview

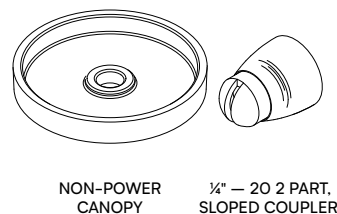
#### + R1 – Non-Power Mounting Kit

- 1 x Non-Power Canopy
- 1 x ¼"-20 Griplock Coupler



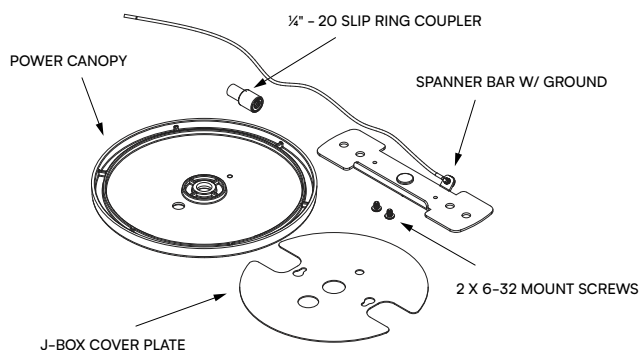
#### + R2 – Non-Power Mounting Kit

- 1 x Non-Power Canopy
- 1 x ¼"-20 2 Part, Sloped Coupler



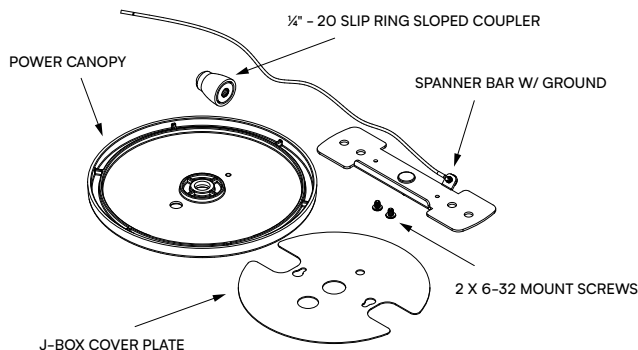
#### + R1 – Power Mounting Kit 1-CCT + 2-CCT

- 1 x Spanner Bar w/ Ground
- 1 x J-box Cover Plate
- 1 x Power Canopy
- 1 x ¼"-20 Griplock Slip Ring Coupler
- 2 x 6-32 Mount Screws



#### + R2 – Power Mounting Kit 1-CCT + 2-CCT

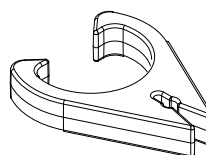
- 1 x Spanner Bar w/ Ground
- 1 x J-box Cover Plate
- 1 x Power Canopy
- 1 x ¼"-20 Griplock Slip Ring Sloped Coupler
- 2 x 6-32 Mount Screws



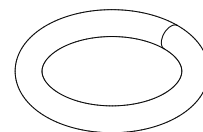
#### + Power Cords + Suspension Cables

**NOTE:** 1 clip is to be placed on the power cord every 4" (102 mm).

**NOTE:** US power cords come with O-rings. For a 2-CCT application 2 x power cords are required. O-rings must be placed on the power cord prior to making electrical connections. The suspension cable can be fed through the O-ring during the suspension connection step.



CORD CLIP



O-RING\*

## Recessed J-Box: Flat Ceiling (R1) + Sloped Ceiling (R2)

### Information

#### + Important

- Read all instructions including wiring and mechanical details before the start of the installation.
- Install in accordance with the local and national building and electrical codes.
- Contact factory if you require assistance or have questions.
- Power cords come installed on fixtures.
- CONSULT A QUALIFIED ELECTRICIAN TO ENSURE CORRECT BRANCH CIRCUIT CONDUCTOR. / CONSULTER UN ÉLECTRICIEN QUALIFIÉ POUR VOUS ASSURER QUE LES CONDUCTEURS DE LA DÉRIVATION SONT ADÉQUATS.

#### + Notes

- This instruction guide covers the installation of R1 and R2 mounting kits. Refer to the Instructions below for the necessary components and steps for a standard installation.
- Power mount canopies are compatible with 4" octagonal J-boxes and 4x4 square J-boxes.



#### Tools Required

##### Tools:

- #2 Phillips Screw Driver



#### Safety Warnings

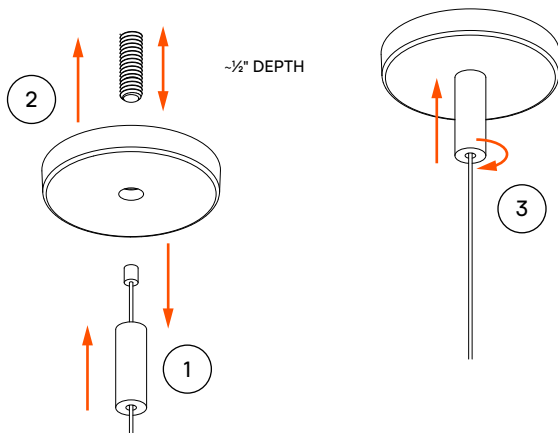
- **Shock hazard!** Fixtures must be connected to building ground via provided ground wire before connecting to main supply power.
- Disconnect or turn off power supply before attempting any installation maintenance or servicing operations.

## Installation Steps — Drywall and Hard Lid R1 + R2

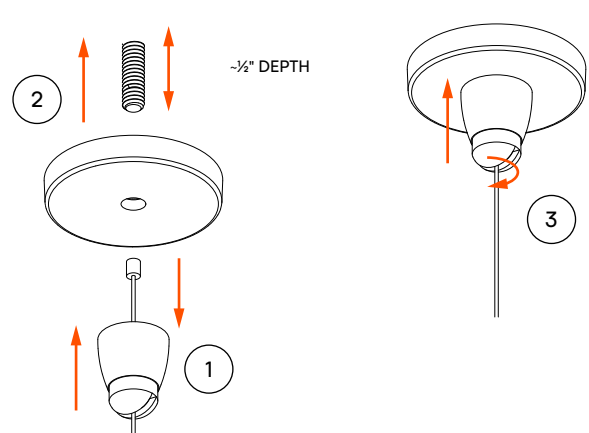
### 1 Install Non-Power Mounting Kit — Flat Ceiling (R1) + Sloped Ceiling (R2)

Identify and gather the non-power mounting kit. Locate assigned locations as per the layout drawings. Install appropriate 1/4" - 20 threaded stud or lag bolts to structure by others. Set the depth to 1/2" exposed from the structure.

1. Feed suspension cable through the coupler.
2. Install the canopy so the 1/4" - 20 hanger goes through the hole.
3. Secure canopy with coupler onto hanger.



R1 — FLAT CEILING



R2 — SLOPED CEILING

## Recessed J-Box: Flat Ceiling (R1) + Sloped Ceiling (R2)

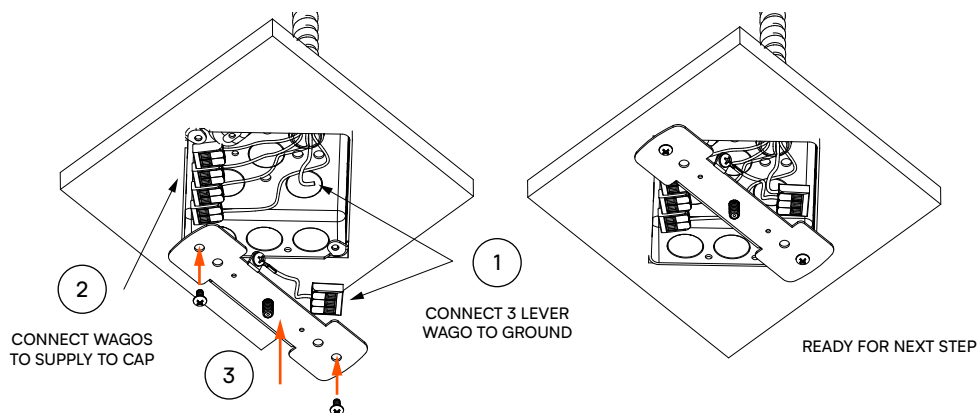
### Installation Steps — Flat Ceiling 1-CCT + 2-CCT Power

#### 2 Install 1-CCT Power Mounting Hardware

Identify and gather the 1-CCT power mounting kit. Locate assigned locations as per the layout drawings. For 2-CCT see step 6 to prepare canopy and J-Box cover plate. NOTE: Hardware is compatible with both 4x4 (shown) and standard octagonal J-Boxes.

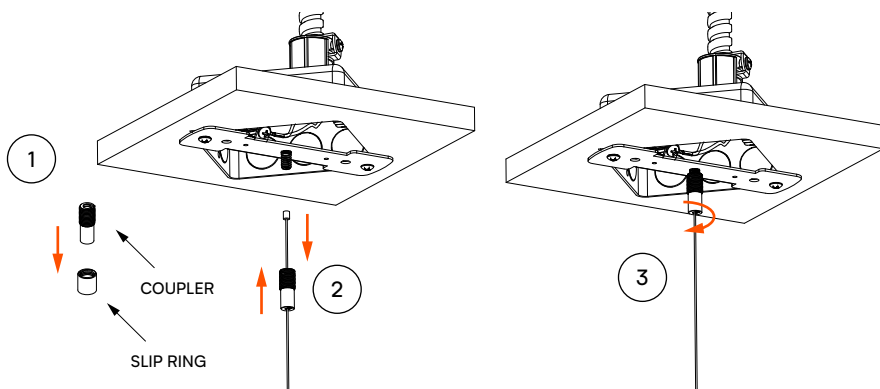
#### 3 Install Spanner Bar and WAGOs

1. Install spanner bar ground wire to building ground with provided 3 lever WAGO.
2. Connect provided 2 lever WAGOs to supply line and control wires to cap.
3. Install spanner bar onto J-box (mounting J-box screws by others).



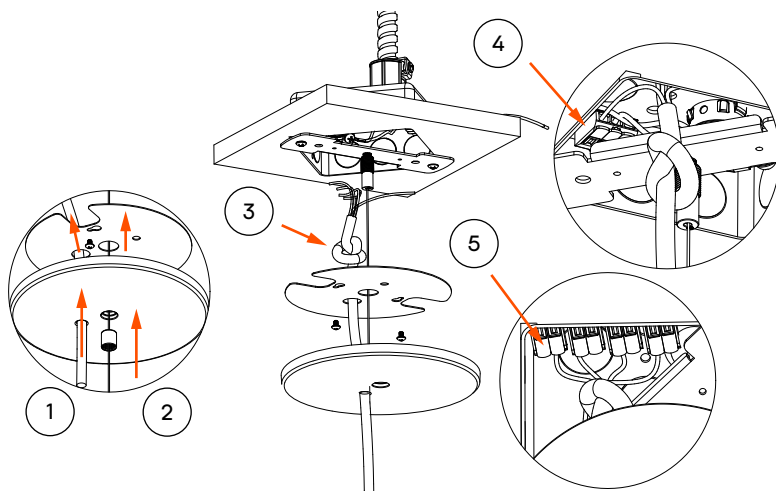
#### 4 Install Coupler to Spanner Bar

1. Remove slip-ring from the coupler.
2. Feed suspension cable through slip-ring coupler (shown) or, slip-ring sloped coupler.
3. Secure to ¼" - 20 stud on spanner bar.



#### 5 Install Power Cord and Make Electrical Connections

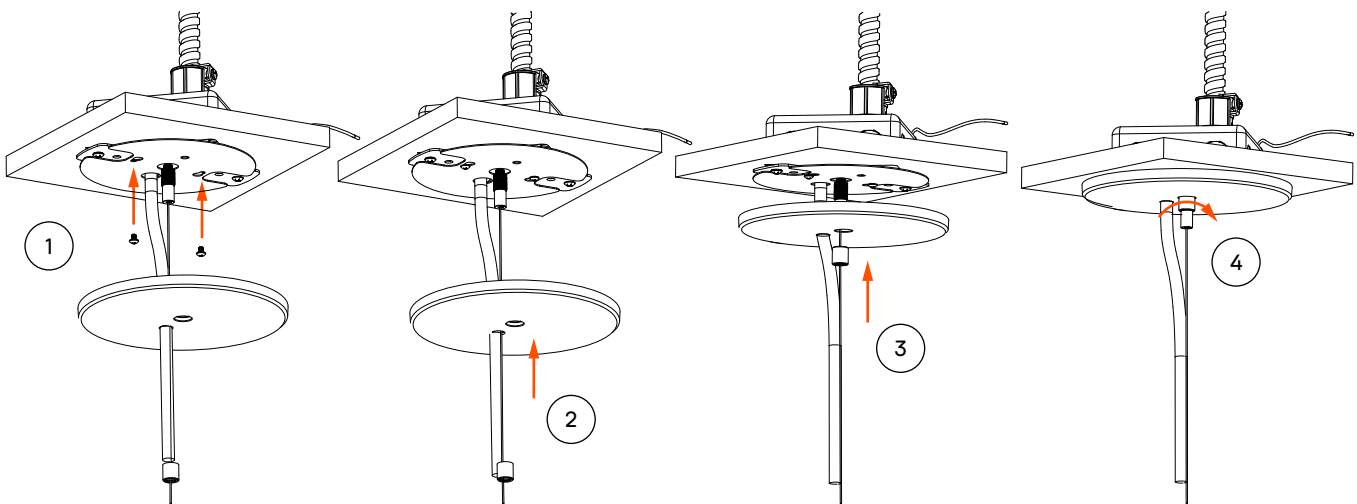
1. Feed the power cord through the power canopy and J-box cover plate.
2. Feed the suspension cable through the slip-ring, canopy, and cover plate.
3. Tie an overhand knot in the power cord once through the canopy and cover plate.
4. First connect the ground wire.
5. Connect remaining electrical connections.



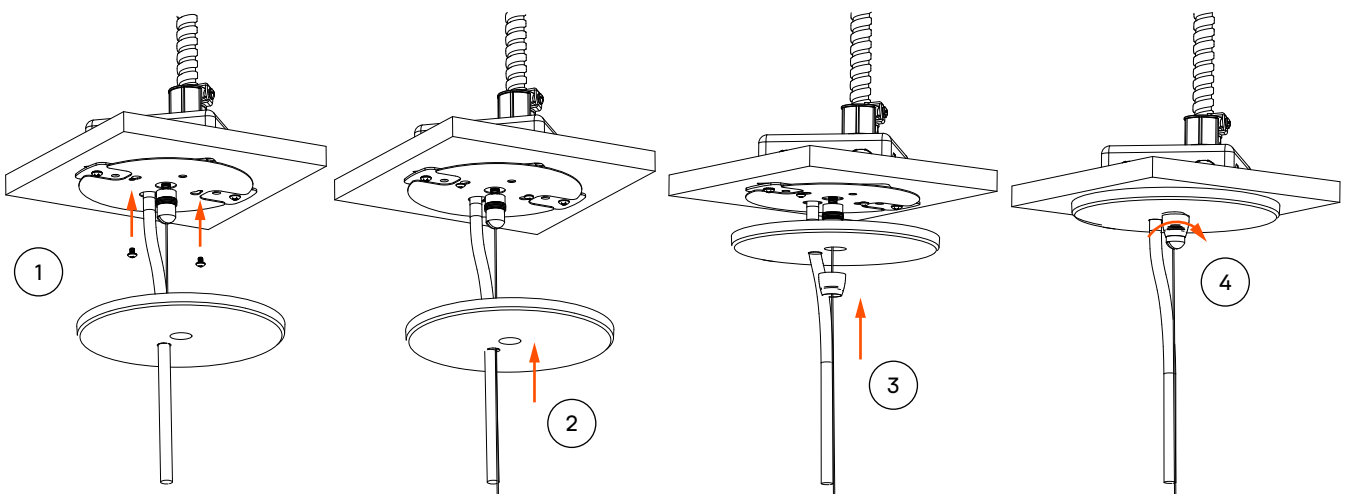
## Recessed J-Box: Flat Ceiling (R1) + Sloped Ceiling (R2)

### 6 Finish Installing Canopy

1. Safely feed connected wires into J-box and cover with J-box cover plate.
2. Secure with provided 6-32 Phillips pan head screws.
3. Raise slip-ring.
4. Secure canopy onto coupler.



R1 — FLAT CEILING

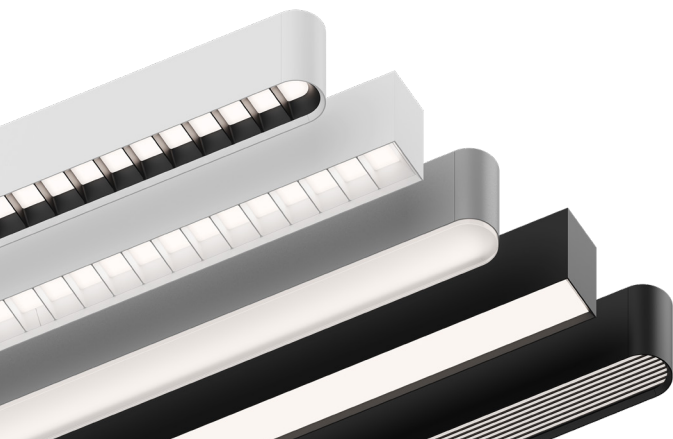
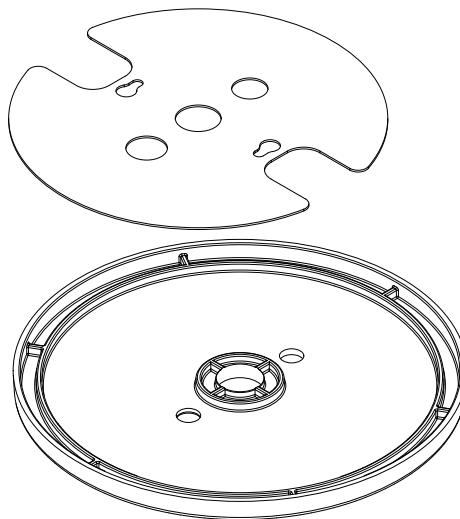


R2 — SLOPED CEILING

## Recessed J-Box: Flat Ceiling (R1) + Sloped Ceiling (R2)

### 7 Dual Circuit (2-CCT) Options

Repeat Step 5 and follow the instructions to install the second power cord through the second hole.



**Different thinking, by design.**



**real help.  
real people.  
real answers.**

778.650.1000  
justask@mindsetlighting.com