

Power Cord Move

Information

Important

- Read all instructions including wiring and mechanical details before the start of the installation.
- Maximum run length of Hyperlink on a single power drop is 56 ft.
- Install in accordance with the local and national building and electrical codes.
- Contact factory if you require assistance or have questions.
- CONSULT A QUALIFIED ELECTRICIAN TO ENSURE CORRECT BRANCH CIRCUIT CONDUCTOR. / CONSULTER UN ÉLECTRICIEN QUALIFIÉ POUR VOUS ASSURER QUE LES CONDUCTEURS DE LA DÉRIVATION SONT ADÉQUATS.



Tools Required

Tools:

- #2 Phillips Screwdriver(s)
- Level
- 5/64" Allen Wrench

Materials:

- n/a



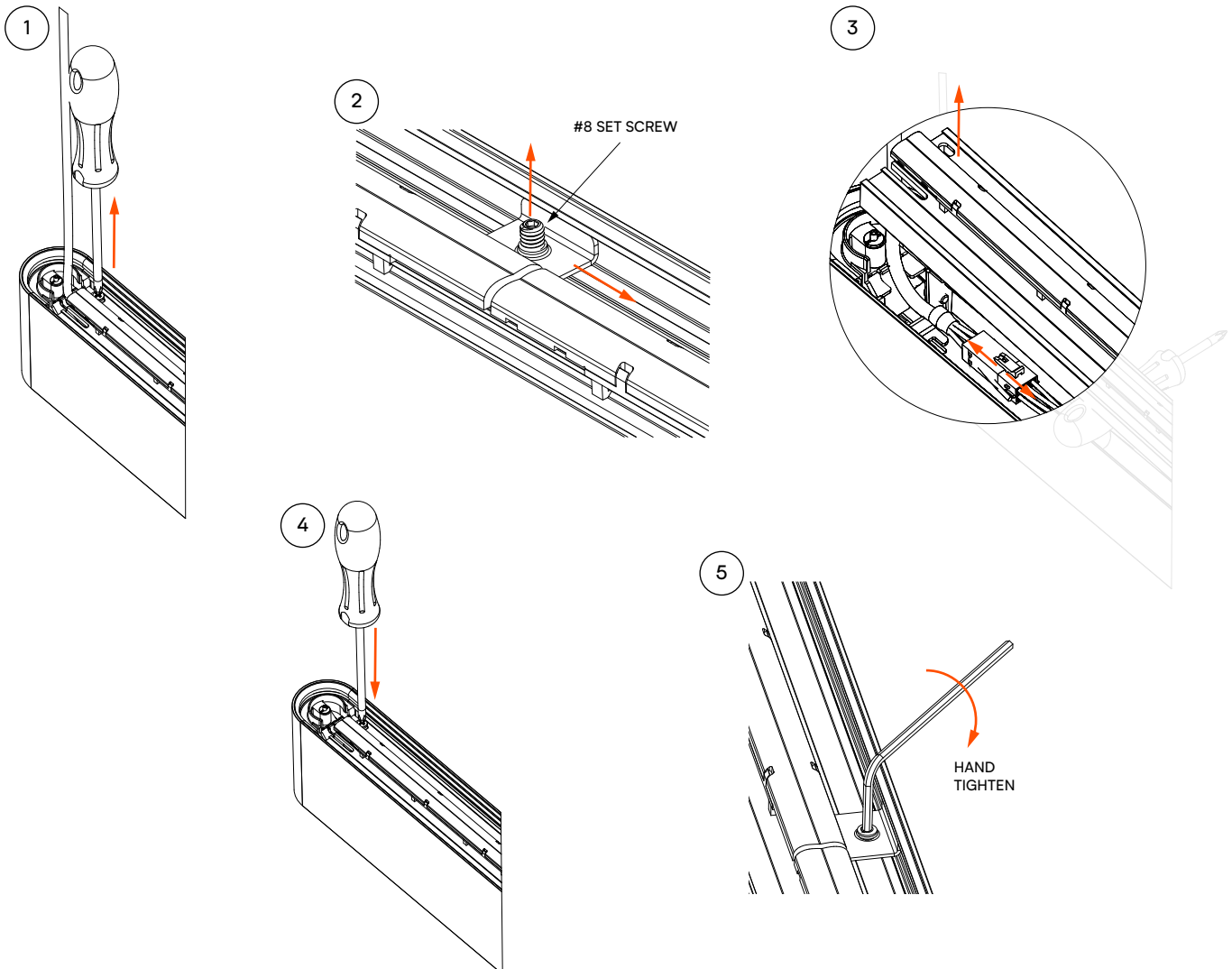
Safety Warnings

- **Shock hazard!** Fixtures must be connected to building ground via provided ground wire before connecting to main supply power.
- Disconnect or turn off power supply before attempting any installation maintenance or servicing operations.

Power Cord Move

1 Move Power Cord From End

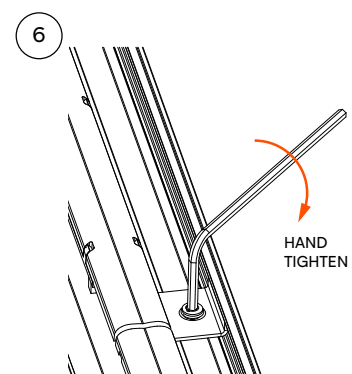
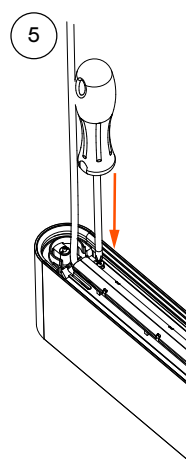
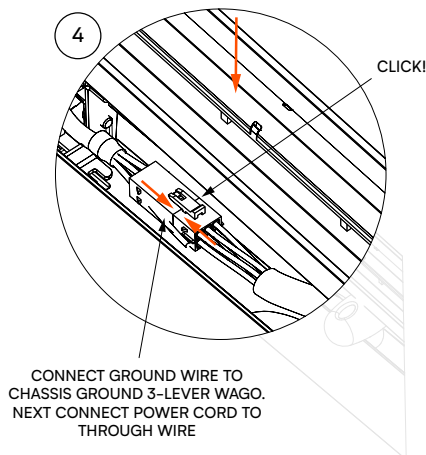
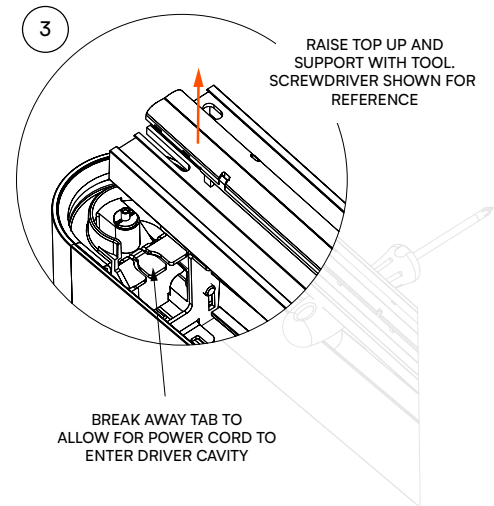
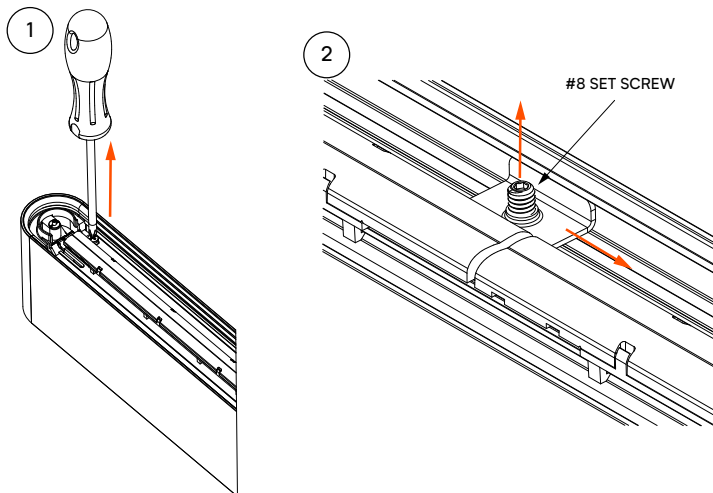
1. Remove screw at end of fixture with power cord to be moved.
2. Loosen set screw if fixture is 5', 6', 7', or an 8' length, and slide hold down bracket to the end of fixture without the power cord.
3. Raise lid to disconnect the power cord from the connector and ground wire from lever WAGO to remove from the fixture.
4. Lower the lid and secure with the screw.
5. Return hold down bracket to previous position and secure in place.



Power Cord Move

2 Install at New Position at an End

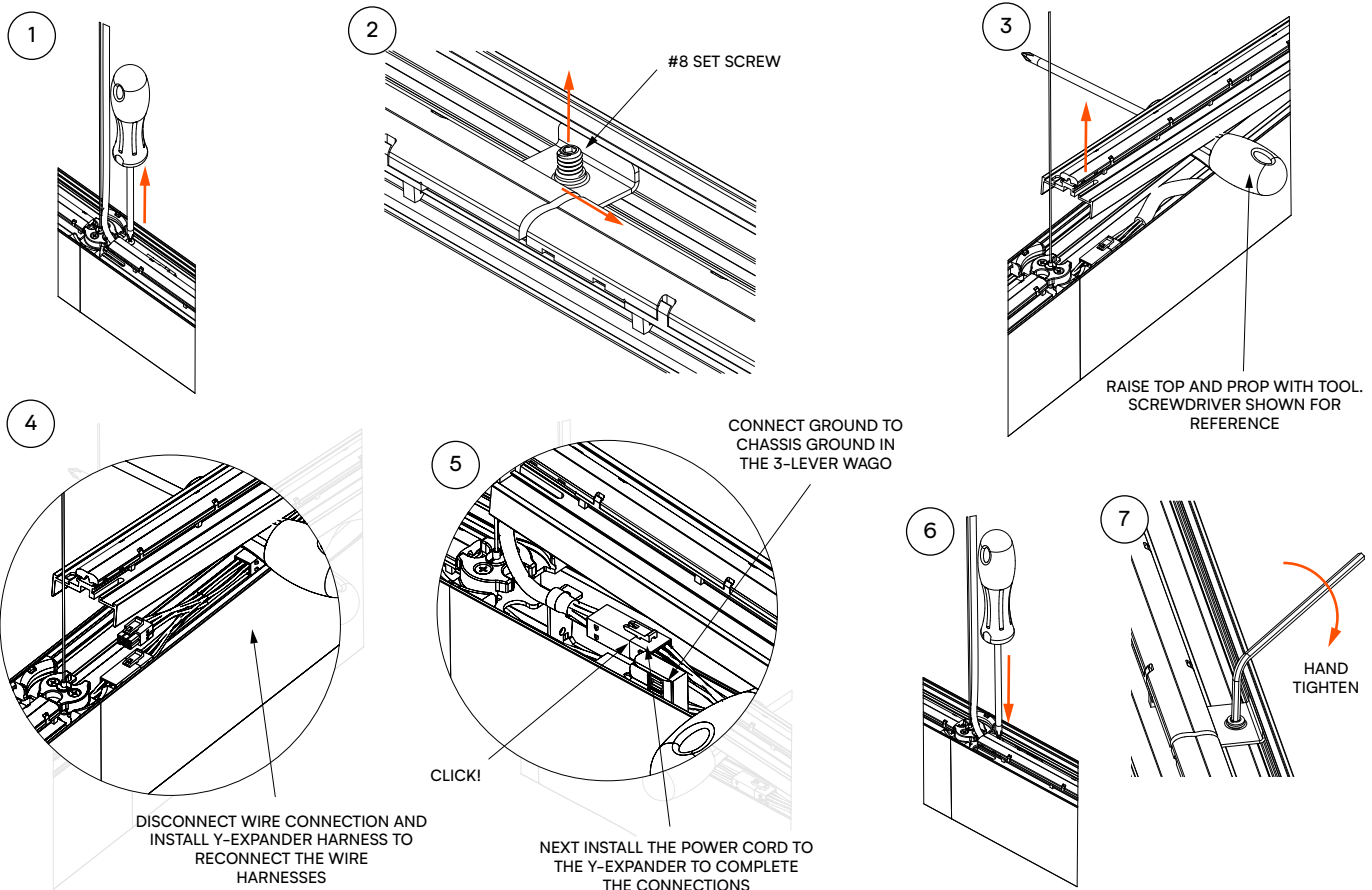
1. Remove the screw at the new location.
2. Loosen the set screw on the top if required as in Step 2 and slide to the opposite end of where the power cord is to be installed.
3. Open the lid and break away the tab on the cross plate to allow for the cord to pass into the driver cavity.
4. Connect the ground wire first, then install the power cord to the connector harness inside the driver cavity.
5. Close the lid and secure by hand tightening the tool.
6. Return hold down bracket and secure in place.



Power Cord Move

3 Install at New Position at Joint

1. Remove screw at new location at the identified joint.
2. Loosen set screw if fixture is 5', 6', 7', or an 8' length, and slide hold down bracket to the end of fixture without the power cord.
3. Raise the lid and support top with tool to gain access to the driver cavity.
4. Disconnect the pass through harness from the harness in the cavity and install the Y-expander between to complete the connection.
5. Connect the ground wire to the 3-Lever WAGO and connect the power cord to the Y-expander.
6. Close the lid and secure by hand tightening the tool.
7. Move the hold down bracket back into position and secure top cover.



Different thinking, by design.



**real help.
real people.
real answers.**

778.650.1000
justask@mindsetlighting.com